

New Parts Bulletin



November 2023

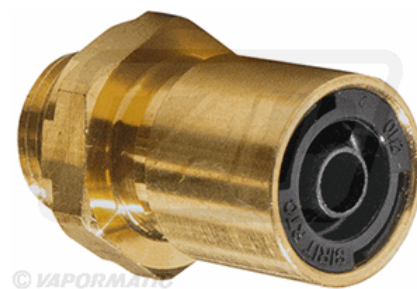
Braking

Heavy duty braking - Air / Straight pushfit connector

VFM4504 Pack qty 6

Adaptor

Trailer parts



Braking

Heavy duty braking - Air / Straight pushfit connector

VFM4505 Pack qty 6

Adaptor

Trailer parts



Braking

Heavy duty braking - Air / Straight pushfit connector

VFM4506 Pack qty 2

Adaptor

Trailer parts



Original equipment manufacturers names and part number are quoted for reference purposes only and are not intended to infer that our replacement parts are used as original equipment.

Public

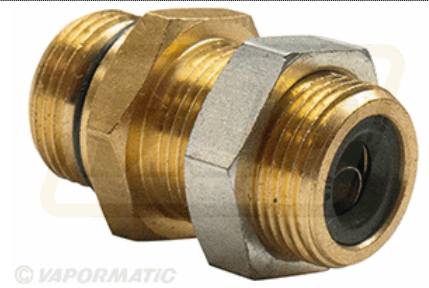
Braking

Heavy duty braking - Air / Bulkhead fitting with Push fit

VFM4510 Pack qty 2

Bulkhead fitting

Trailer parts



Braking

Heavy duty braking - Air / Pushfit Fitting Release Tool

VFM4511 Pack qty 1

Release tool

Trailer parts



Braking

Heavy duty braking - Air / Pushfit Fitting Release Tool

VFM4512 Pack qty 1

Release tool

Trailer parts



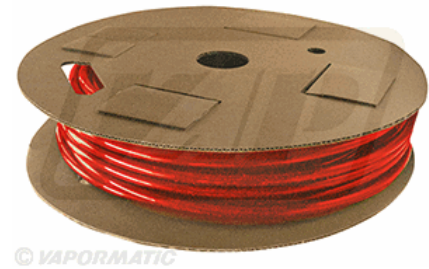
Braking

Heavy duty braking - Air / PA12 Nylon Air Tube

VFM4518 Pack qty 1

Nylon tube

Trailer parts



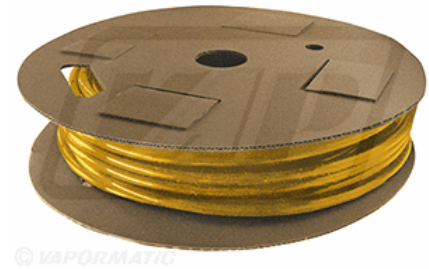
Braking

Heavy duty braking - Air / PA12 Nylon Air Tube

VFM4519 Pack qty 1

Nylon tube

Trailer parts



Braking

Heavy duty braking - Air / Male / female block elbow

VFM4522 Pack qty 6

Male/female elbow

Trailer parts



© VAPORMATIC

Braking

Heavy duty braking - Air / Male / female block elbow

VFM4523 Pack qty 2

Male/female elbow

Trailer parts



© VAPORMATIC

Braking

Heavy duty braking / Clevis and pin

VFM4530 Pack qty 1

Clevis

Trailer parts



© VAPORMATIC

Braking

Heavy duty braking / Clevis and pin

VFM4531 Pack qty 1

Clevis

Trailer parts



© VAPORMATIC

Braking

Heavy duty braking - Air / Straight pushfit connector

VFM4534 Pack qty 1

Connector

Trailer parts



© VAPORMATIC

Braking

Heavy duty braking - Air / Straight pushfit connector

VFM4535 Pack qty 1

Connector



© VAPORMATIC

Trailer parts

Braking

Heavy duty braking - Air / Air & Hyd. Brake Chamber

VFM4536 Pack qty 1

Air / hydraulic brake chamber



© VAPORMATIC

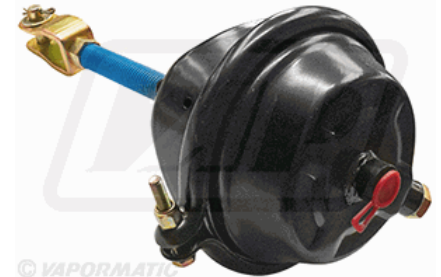
Trailer parts

Braking

Heavy duty braking - Air / Air only brake chamber

VFM4538 Pack qty 1

Air brake chamber



© VAPORMATIC

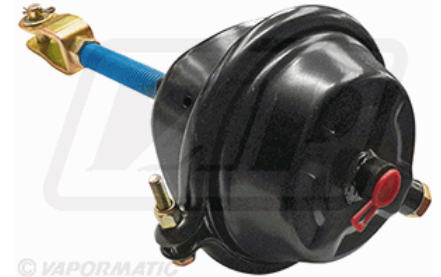
Trailer parts

Braking

Heavy duty braking - Air / Air only brake chamber

VFM4539 Pack qty 1

Air brake chamber



© VAPORMATIC

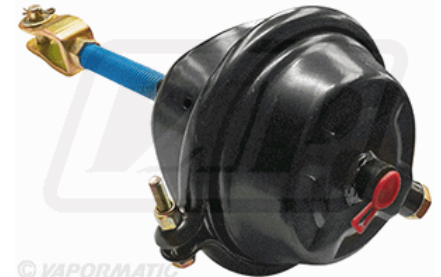
Trailer parts

Braking

Heavy duty braking - Air / Air only brake chamber

VFM4540 Pack qty 1

Air brake chamber



© VAPORMATIC

Trailer parts

ABS Braking

ABS components / In cab ABS control box

VFM5008 Pack qty 1

Control box

Trailer parts



Tools

Power Tools / Impact Driver and Screwdriver

VLA1724 Pack qty 1

Cordless Impact Driver 1/4" 18V 5Ah (without charger and battery).

3 speeds selection (for more precision)
Automatic shut-off function.
Circular LED strips at the tip for better visibility of the work area.
BRUSHLESS MOTOR.



Workshop

Cleaning / Traffic Film Remover

VLB4349 Pack qty 1

Vehicle cleaner

General Cleaner:

- Does not contain ingredients which accelerate metal corrosion
- Safe on most paintwork, metal surfaces, glass and rubber
- Contains rinse and shine additives
- Non-caustic
- Neutral Formula



Highway trailer

Lighting / Rear lamp

VLC2392 Pack qty 1

LED lamp

Trailer parts



Highway trailer

Lighting / Rear lamp

VLC2393 **Pack qty 1**

LED lamp

Trailer parts



© VAPORMATIC

Agricultural trailer

Lighting / Number plate lamp

VLC2397 **Pack qty 1**

LED number plate lamp

Trailer parts

LED number plate lamp. 12V/24V Prewired with 1.5m cable and SC connector. length 97mm Height of lamp from surface mounting 65mm Depth of lamp 62mm. Bolt hole centres 46mm.



© VAPORMATIC

Lighting

Trailer lighting / Marker lamp

VLC2409 **Pack qty 1**

LED marker lamp

Trailer parts

Vertical left and right handed LED marker lamp. Prewired with 2.5m cable and SC connector. Surface mount to end of lamp 64mm. Height of lamp 100mm. Width of mounting bracket 38mm with 78mm hole centres. Diameter of light unit 55mm.



© VAPORMATIC

Electronic components

Switches / Brake light switch

VLC2560 **Pack qty 1**

Brake light switch

Case New Holland 81834441

Ford New Holland 81834441

Ford New Holland - 2000, 2310, 2600, 2610, 2810, 2910, 3000, 3055, 3230, 3310, 3430, 3600, 3610, 3900, 3910, 3930, 4000, 4100, 4110, 4130, 4330, 4600, 4610, 4630, 4830, 5000, 5030, 5100, 5110, 5600, 5610, 5700, 5900, 6410, 6600, 6610, 6700, 6710, 6810, 7000, 7100, 7200, 7410, 7600, 7610, 7700, 7710, 7810, 7910, 8000, 8210, 8530, 8630, 8730, 8830, 9000, TS100, TS110, TS80, TS90, TW15, TW25, TW35, TW5.



© VAPORMATIC

Audio and Visual

CabCam observation systems / Wired Kit

VLC5097 Pack qty 1

HD camera Kit



9 inch wired HD QUAD colour touch screen / touch button monitor, 4 camera capability, audio speaker, remote control, 27 Pin wire harness. • Includes: Monitor (VLC5098), Camera (VLC5684), and Cable (VLC5691).

Audio and Visual

CabCam observation systems / Monitor

VLC5098 Pack qty 1

HD monitor

Accessories New .

9" High Definition wired QUAD colour touch screen / touch button monitor, 4 camera capability, audio speaker, remote control, 27 Pin wire harness



Audio and Visual

CabCam observation systems / Wired Kit

VLC5099 Pack qty 1

HD camera Kit

Accessories New .

7" wired CabCAM system with an HD monitor and standard analog colour • Includes: Monitor (VLC5105), Camera (VLC5684),



Audio and Visual

CabCam observation systems / Monitor

VLC5105 Pack qty 1

HD monitor

Accessories New .

7" High Definition colour monitor, 3 camera capability, audio speaker, remote control, 13 pin wire harness



Audio and Visual

CabCam observation systems / Monitor

VLC5107 Pack qty 1

HD monitor

Accessories New .

7" Weatherproof wired HD touch screen / touch button QUAD colour monitor, 4 camera capability, audio speaker, remote control, 27 Pin wire harness.



Audio and Visual

CabCam observation systems / Wireless Kit

VLC5108 Pack qty 1

HD camera Kit

(1) 7" HD Digital Wireless QUAD colour monitor, 4 camera capability, audio speaker, remote control, 27 pin wire harness, recording capability on Micro SD/TF Card (Max. 128G). Micro SD/TF Card not included• Includes: Monitor (VLC5109), Camera (VLC5667).



Audio and Visual

CabCam observation systems / Monitor

VLC5109 Pack qty 1

HD monitor

Accessories New .

7" HD Digital Wireless QUAD colour monitor, 4 camera capability, audio speaker, remote control, 27 Pin wire harness



Audio and Visual

CabCam observation systems / Wired Kit

VLC5110 Pack qty 1

HD camera Kit

(1) 9" HD touch button colour monitor, 4 camera capability, audio speaker, remote control, 22 pin wire harness• Includes: Monitor (VLC5111), Camera (VLC5684), and Cable (VLC5689).



Audio and Visual

CabCam observation systems / Monitor

VLC5111 Pack qty 1

HD monitor



9" HD Touch Button colour monitor, 4 camera capability, audio speaker, remote control, 22 pin wire harness

Audio and Visual

CabCam observation systems / Wireless Kit

VLC5112 Pack qty 1

HD camera Kit



(1) 10" HD touch screen Digital Wireless QUAD colour monitor, 4 camera capability, audio speaker, remote control, 27 pin wire harness, recording capability on Micro SD/TF Card (Max. 128G). Micro SD/TF Card not included

Audio and Visual

CabCam observation systems / Monitor

VLC5113 Pack qty 1

HD monitor



10" HD touch screen Digital Wireless QUAD colour monitor, 4 camera capability, audio speaker, remote control, 27 Pin wire harness

Audio and Visual

CabCam observation systems / Wired Kit

VLC5114 Pack qty 1

HD camera Kit



(1) 7" HD touch button colour monitor, 4 camera capability, audio speaker, remote control, 22 pin wire harness• Includes: Monitor (VLC5115), Camera (VLC5684), and Cable (VLC5689).

Audio and Visual

CabCam observation systems / Monitor

VLC5115 Pack qty 1

HD monitor

7" HD Touch Button colour monitor, 4 camera capability, audio speaker, remote control, 22 pin wire harness



© VAPORMATIC

Audio and Visual

CabCam observation systems / Wired Kit

VLC5116 Pack qty 1

HD camera Kit

7" wired CabCAM system with an HD monitor and standard analog white light colour camera• Monitor (VLC5105),



© VAPORMATIC

Audio and Visual

CabCam observation systems / Wired Kit

VLC5117 Pack qty 1

HD camera Kit

(1) 7" Weatherproof touch screen / touch button HD QUAD colour monitor, 4 camera capability, audio speaker, remote control, 27 Pin wire harness. • Includes: Monitor (VLC5107), Camera (VLC5687), and Cable (VLC5691).



© VAPORMATIC

Audio and Visual

CabCam observation systems / Wired Kit

VLC5118 Pack qty 1

HD camera Kit

(1) 9" touch screen / touch button HD QUAD colour monitor, 4 camera capability, audio speaker, remote control, 27 Pin wire harness. • Includes: Monitor (VLC5098), Camera (VLC5687), and Cable (VLC5691).



© VAPORMATIC

Audio and Visual

CabCam observation systems / Wired Kit

VLC5119 Pack qty 1



HD camera Kit

(1) 7" HD weatherproof touch button colour monitor, 4 camera capability, audio speaker, remote control, 22 pin wire harness• Includes: Monitor (VLC5120), Camera (VLC5687), and Cable (VLC5689).

Audio and Visual

CabCam observation systems / Monitor

VLC5120 Pack qty 1

HD monitor



7" HD Weatherproof Touch Button colour monitor, 4 camera capability, audio speaker, remote control, 22 pin wire harness

Audio and Visual

CabCam observation systems / Colour camera

VLC5667 Pack qty 1

HD camera



Weatherproof, Digital Wireless HD, colour Camera with Audio, Infrared Illuminators Allow Up To 32 Feet Of Visibility In The Dark, Withstands Off-Road Conditions

Audio and Visual

CabCam observation systems / Colour camera

VLC5668 Pack qty 1

HD camera



CabCAM Camera, High Definition resolution and has audio and a 110 degree viewing angle.

Audio and Visual

CabCam observation systems / Colour camera

VLC5669 Pack qty 1

HD camera

Weatherproof, Digital Wireless HD, colour Camera with Audio, White LED Light Illuminators, Withstands Off-Road Conditions



Audio and Visual

CabCam observation systems / Colour camera

VLC5679 Pack qty 1

HD camera

HD License Plate colour Camera, Weatherproof, Audio, Infrared Illuminators Allow Up To 9 Feet Of Visibility In The Dark, Withstands Off-Road Conditions



Audio and Visual

CabCam observation systems / Colour camera

VLC5687 Pack qty 1

HD camera

Weatherproof, HD colour Camera with Audio, Infrared Illuminators, Withstands Off-Road Conditions.



Audio and Visual

CabCam observation systems / Antenna

VLC5688 Pack qty 1

Antenna

Replacement antenna for CabCAM part #s VLC5112 and VLC5113 only.



Audio and Visual

CabCam observation systems / Wiring Harness

VLC5689 Pack qty 1

Extension cable



Harness for the following CabCAM parts: VLC5110, VLC5111, VLC5114, VLC5115, VLC5119 and VLC5120

Audio and Visual

CabCam observation systems / Colour camera

VLC5690 Pack qty 1

HD camera



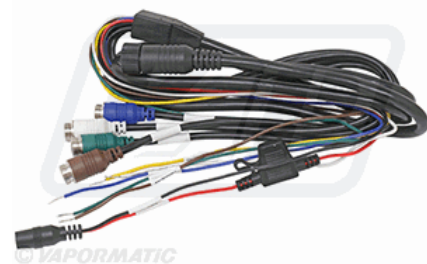
For use with High Definition wired CabCAM systems only; Has audio and a 130 degree viewing angle

Audio and Visual

CabCam observation systems / Wiring Harness

VLC5691 Pack qty 1

Extension cable



27 pin harness for wired quad CabCAM monitors.

For the following complete and monitor kits: VLC5097, VLC5098, VLC5106, VLC5107, VLC5117, and VLC5118.

Cab

Cab glass / Door hinge

VLD1489 Pack qty 1

RH upper door Hinge

John Deere AL179830



John Deere - 5085M, 5093E, 5095M, 5101E, 5105M, 5220, 5225, 5320, 5325, 5420, 5425, 5520, 5525, 5603, 5625, 5725, 6090MC, 6090RC, 6095MC, 6095RC, 6100D, 6100MC, 6100RC, 6105J, 6105MC, 6105RC, 6110D, 6110J, 6110MC, 6110RC, 6115D, 6115MC, 6115RC, 6125D, 6130D, 6140D, 6140J, 6140JH, 6145J, 6155J, 6155JH, 7220, 7320, 7420, 7515, 7520, R4040i, R4050i, R4140i, R4150i.

John Deere - Standard.

Grass Land Equipment

Baler / Pickup Idler sprocket bearing

VLD3242 **Pack qty 1**

Bearing

John Deere DC220090

John Deere - C441R, F441M, V451G, V451M, V461M.

Technical Details

Inner diameter	35 mm
Outer diameter	80 mm
Inner width	21 mm
Outer width	21 mm



Tractor Cab

Cab accessories / Tablet Holder

VLD5280 **Pack qty 1**

Bracket phone & Ipod holder

Accessories New .



Straw discharge

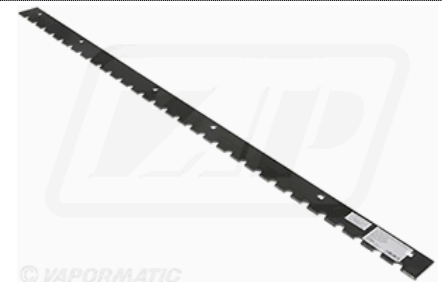
Rear beater / Blade

VLH6483 **Pack qty 1**

Rear beater blade

John Deere H202621

John Deere - 9470STS, 9560iSTS, 9570STS, S560.



Threshing

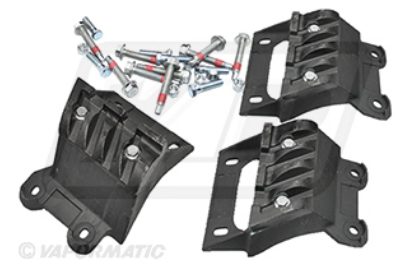
Rotor / Threshing element

VLH6486 **Pack qty 1**

Rasp bar kit

John Deere AH216573

John Deere - 9670STS, 9770STS, 9870STS, 9880iSTS, 9880iSTS HM, 9880STS, S690, S690 HM.
For Bullet Rotors, High wear elements. Fixing hardware included.



All Vapormatic quality replacement parts carry an industry leading **12 month parts and labour warranty**.
For further information on specific items please visit www.vapormatic.com

Original equipment manufacturers names and part number are quoted for reference purposes only and are not intended to infer that our replacement parts are used as original equipment.

Public

Threshing

Rotor / Blade kit

VLH6493 **Pack qty 1**

Repair kit

John Deere AH216568

John Deere - 9650STS, 9670STS, 9750STS, 9770STS, 9870STS, 9880iSTS, 9880iSTS HM, 9880STS, S650, S660, S670, S670 HM, S680, S680 HM, S690, S690 HM, S760, S770, S780, S790.

Front flight repair kit for Bullet / TriStream Rotor. Fixing hardware included.



Header

Auger / Crop finger holder pin

VLH6497 **Pack qty 1**

Pin

John Deere H171190

John Deere - 614R, 615F, 615R, 616R, 618F, 618R, 620F, 620R, 622F, 622R, 625F, 625R, 630F, 630R, 635F, 635R, 913, 915, 918, 920, 922, 924, 925, 930, HD35F, HD35R, HD35X, HD40F, HD40R, HD40X, HD45F, HD45R, HD45X, HD50F, HD50R.



Feeder

Elevator / Chain link - Pin

VLH6499 **Pack qty 10**

Pin

John Deere HXE98412

John Deere - 9540iWTS, 9560iWTS, 9560WTS, 9580iWTS, 9580WTS, 9640iWTS, 9640WTS, 9660iWTS, 9660WTS, 9680iWTS, 9680WTS, 9780CTS, 9780iCTS, C670, T550, T560, T660, T670, W540, W550, W650, W660.



Technical Details

Diameter	2.2 mm
Length	22 mm

Grain transfer

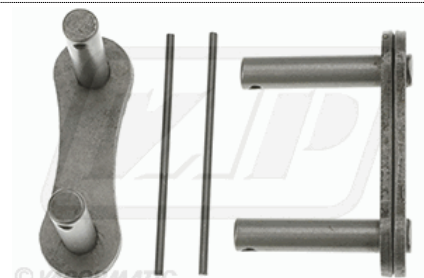
Clean grain elevator / Chain link - Joiner

VLH6509 **Pack qty 2**

Chain link

John Deere AZ27728

John Deere - 1055, 1065, 1068H, 1072, 1075, 1075H4, 1085, 1085H4, 1155, 1157, 1158, 1166, 1166H4, 1169, 1169H4, 1174, 1174H4, 1177, 1177H4, 1188, 1188H4, 2054, 2056, 2058, 2254, 2256, 2258, 2264, 2266, 2266EXTRA, 4435, 4435HY, 965H, 968H, 975, 975H, 985, 985H4.



Threshing

Concave / Concave wire

VLH6531 **Pack qty 10**

Concave wire

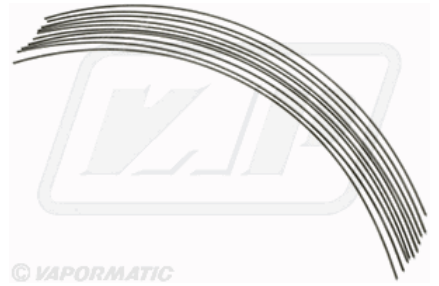
John Deere H201354

John Deere - 9540iWTS, 9540WTS, 9560iWTS, 9560WTS, 9580iWTS, 9580WTS, 9640iWTS, 9640WTS, 9660iWTS, 9660WTS, 9680iWTS, 9680WTS, 9780CTS, 9780iCTS, C670, T550, T560, T660, T670, W540, W550, W650, W660.

Technical Details

Wire size	3.4 mm
Length	600 mm
Crop type	Grain

Use with AZ100315 or AXE53053 small grain, full wire concaves (narrow machines). Use with AZ100290 or AXE53100 small grain, full wire concaves (wide machines).



© VAPORMATIC

Transmission drive

Belts LH / Rotor belt

VLM9255 **Pack qty 1**

Drive belt

John Deere HXE63990

John Deere - 9770STS, 9870STS, 9880iSTS, 9880iSTS HM, 9880STS, S670, S670 HM, S680, S680 HM, S690, S690 HM, S780, S790.



© VAPORMATIC

Engine

Cylinder block / Cylinder block

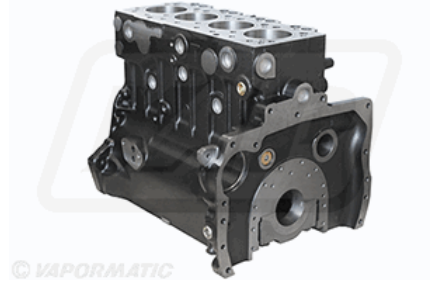
VPB8503 **Pack qty 1**

Engine block

Massey Ferguson 3641082M91

Massey Ferguson - 168, 175, 265, 275, 3050, 365, 375, 565, 675.

Perkins - A4.236.



© VAPORMATIC

Engine

Cylinder block / Cylinder block

VPB8504 **Pack qty 1**

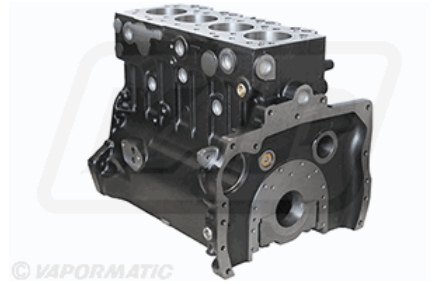
Engine block

Massey Ferguson 3641083M91

Massey Ferguson 4225194M91

Massey Ferguson - 178, 185, 188, 285, 290, 3060, 390, 590, 690.

Perkins - A4.248.



© VAPORMATIC

Engine

Fuel system / Injector sleeve

VPD4617 **Pack qty 1**

Injector sleeve

John Deere RE543935

John Deere - 5085M.

John Deere - 4045HLV70.



Engine

Fuel system / Fuel filler cap

VPD4622 **Pack qty 1**

Fuel filter cap

Valtra Valmet V627730

Accessories New .

Valtra Valmet - 205, 255, 305, 315, 355, 365, 405, 415, 455, 465, 555, 565, 600, 605, 6100, 6200, 6250Hi, 6300, 6350Hi, 6400, 6550Hi, 6600, 665, 6750Hi, 6800, 6850Hi, 6900, 700, 705, 800, 805, 8050, 8100, 8150, 8150Hi, 8200, 8350Hi, 8400, 8450, 8450Hi, 8550, 8550Hi, 865, 8750, 8950Hi, 900, 905, A65, A75, A85, A95.

Technical Details

Suitable for

Massey Ferguson



Tractor

Fuel accessories / Fuel filler cap

VPD4623 **Pack qty 1**

Lockable fuel cap

Massey Ferguson 4385513M1

Accessories New .

Massey Ferguson - 5609 Dyna 4, 5610 Dyna 4, 5611 Dyna 4, 5611 Dyna 6, 5612 Dyna 4, 5612 Dyna 6, 5613 Dyna 4, 5613 Dyna 6, 5711S Dyna 4, 5711S Dyna 6, 5712S Dyna 4, 5712S Dyna 6, 5713S Dyna 4, 5713S Dyna 6, 7716 Dyna VT, 7718 Dyna VT, 7719 Dyna 6, 7719 Dyna VT, 7720 Dyna 6, 7722 Dyna 6, 7724 Dyna 6, 7724 Dyna VT, 7726 Dyna 6, 7726 Dyna VT, 8727S Dyna VT, 8730S Dyna VT.

Technical Details

Suitable for

Massey Ferguson



All Vapormatic quality replacement parts carry an industry leading **12 month parts and labour warranty**. For further information on specific items please visit www.vapormatic.com

Original equipment manufacturers names and part number are quoted for reference purposes only and are not intended to infer that our replacement parts are used as original equipment.

Public

Engine

Fuel system / Fuel filler cap

VPD4624 **Pack qty 1**

Lockable fuel cap

Massey Ferguson 3616543M1

Accessories New .

Massey Ferguson - 3050, 3060, 3065, 3070, 3080, 3085, 3090, 3115, 3120, 3125, 3610, 3630, 3635, 3645, 3650, 3655, 3670, 3680, 3690, 6110, 6120, 6130, 6140, 6150, 6160, 6170, 6180, 6190, 6235, 6245, 6255, 6260, 6265, 6270, 6280, 6290, 8110, 8120.

Technical Details

Suitable for

Massey Ferguson



Service

Filtration / Engine oil filter

VPD5247 **Pack qty 1**

Oil filter

Case New Holland 84475545

Ford New Holland 84475545

Ford New Holland - T4030F, T4040F, T4050F, T4060F.



Service

Filtration / Fuel filter

VPD6267 **Pack qty 1**

Fuel filter

John Deere RE509036

John Deere - 4720, 6520, 6620, 6820, 6920, 6920S, 7220, 7230, 7420, 7520, 7720, 7815, 7820, 7920, 9540WTS, 9550, 9550SH, 9560iWTS.

John Deere - 6068HL470, 6068HL471, 6068HL472, 6068HL473, 6068HL474, 6068HL475, 6068HRW54, 6068HRW59, 6068HRW61, 6068HRW62, 6068HRW63, 6068HRW70, 6068HRW71, 6068HZ060, 6068HZ470, 6081HH008, 6081HH009, 6081HH020, 6081HH021, 6081HH054, 6081HH055, 6081HN051, 6081HZ008, 6081HZ017.



All Vapormatic quality replacement parts carry an industry leading **12 month parts and labour warranty**. For further information on specific items please visit www.vapormatic.com

Original equipment manufacturers names and part number are quoted for reference purposes only and are not intended to infer that our replacement parts are used as original equipment.

Public

Service

Filtration / Fuel filter

VPD6272 **Pack qty 1**

Fuel filter

John Deere RE508633

John Deere - 7710, 7810, 8100, 8100T, 8110, 8110T, 8200, 8200T, 8210, 8210T, 8300, 8300T, 8310, 8310T, 8400, 8400T, 8410, 8410T.

John Deere - 6076HRW33, 6076HRW34, 6076HRW35, 6081H, 6081HRW01, 6081HRW02, 6081HRW03, 6081HRW06, 6081HRW07, 6081HRW08, 6081HRW09, 6081HRW10, 6081HRW11, 6081HRW12, 6081HRW13, 6081HRW14, 6081HRW16, 6081HRW17, 6081HRW18, 6081HRW40, 6081HRW43, 6081TRW01, 6081TRW02, 6081TRW03, 6081TRW04, 6081TRW05, 6081TRW06, 6081TRW07, 6081TRW08, 6081TRW09, 6081TRW10, 6081TRW11, 6081TRW12, N/A, PowerTech 8.1H.



Service

Filtration / Outer air filter

VPD7647 **Pack qty 1**

Outer air filter

John Deere AL215053

John Deere - 6140M, 6140R, 6150R, 6170M, 6170R, 6175R, 6190R, 6195R, 6210R, 6215R, R4023, R4040i, R4050i, R4140i, R4150i.

John Deere - 4045HL496, 4045HN051, 4045HN052, 4045HN053, 4045HN054, 6068HL286, 6068HL490, 6068HL495, 6068HL497, 6068HL499, 6068HL501, 6068HN062, 6068HN063, 6068HN070, 6068HN071, 6068HN073.



Service

Filtration / Inner air filter

VPD7648 **Pack qty 1**

Inner air filter

John Deere AL215054

John Deere - 6105M, 6105R, 6110M, 6110R, 6115M, 6120M, 6120R, 6125M, 6125R, 6130M, 6130R, 6135M, 6135R, 6140M, 6145M, 6145R, 6150M, 6150R, 6155M, 6155R, 6170M, 6175M, 6175R, 6190R, 6195M, 6195R, 6210R, 6215R, 6R 110, 6R 120, 6R 130, 6R 140, 6R 145, 6R 150, 6R 155, 6R 165, 6R 175, 6R 185, 6R 195, 6R 215, R4023, R4040i, R4050i, R4140i, R4150i.

John Deere - 4045HL289, 4045HL495, 4045HL496, 4045HL497, 4045HL500, 4045HL501, 4045HL503, 4045HL504, 4045HL505, 4045HL506, 4045HL536, 4045HL555, 4045HL556, 4045HL557, 4045HN051, 4045HN052, 4045HN053, 4045HN054, 4045HN057, 6068HL286, 6068HL289, 6068HL490, 6068HL495, 6068HL497, 6068HL498, 6068HL499, 6068HL501, 6068HL502, 6068HL503, 6068HL504, 6068HL505, 6068HL506, 6068HL507, 6068HL508, 6068HL535, 6068HL538, 6068HL555, 6068HL557, 6068HL558, 6068HN062, 6068HN063, 6068HN070, 6068HN071, 6068HN073.



Service

Filtration / Outer air filter

VPD7649 Pack qty 1

Outer air filter

John Deere AL215055

John Deere - 6105M, 6105R, 6110M, 6110R, 6115M, 6115R, 6120M, 6120R, 6125M, 6130M, 6130R, 6140M, 6R 110, 6R 120, 6R 130, 6R 140, 6R 150.

John Deere - 4045HL289, 4045HL495, 4045HL497, 4045HL500, 4045HL503, 4045HL505, 4045HL536, 4045HL555, 4045HL557, 4045HN057.



Engine

Cooling system / Radiator

VPE3117 Pack qty 1

Radiator

Massey Ferguson 1660499M92

Massey Ferguson - 135, 140, 145, 148, 152, 40.

Perkins - AD3.152.



Engine

Cooling system / Radiator cap

VPE3276 Pack qty 1

Radiator cap

John Deere AT173610

John Deere - 9560iSTS, 9670STS, 9770STS, S560, S660, S670, S670 HM, S690.

John Deere - 6090HCQ01, 6090HCQ03, 6090HH005, 6090HH006, 6090HH008, 6090HH015, 6090HH016, 6090HH020, 6090HH021, 6090HH022, 6090HH023, 6090HZ021, 6135HH001, 6135HH002.



Engine

Cooling system / Radiator cap

VPE3277 Pack qty 1

Coolant tank cap

John Deere AT322214

John Deere - 2204, 4720, 4730, 4830, 7185J, 7195J, 7205J, 7210J, 7225J, 7630, 7730, 7830, 7930, 9230, 9330, 9430, 9430T, 9530, 9530T, 9630, 9630T.

John Deere - 6068HBM01, 6068HBM04, 6068HN051, 6068HN053, 6068HN056, 6068HN057, 6068HNW02, 6068HRW64, 6068HRW65, 6068HRW78, 6068RW203, 6068RW208, 6090HRW24, 6135HRW01, 6135HRW02, 6135HRW04.



Engine

Cooling system / Drain tap

VPE3612 Pack qty 1

Radiator tap

John Deere AL110979

John Deere - 6010, 6010SE, 6100, 6100SE, 6110, 6110L, 6110SE, 6200, 6200L, 6200SE, 6210, 6210L, 6210SE, 6300, 6300L, 6300SE, 6310, 6310L, 6310S, 6310SE, 6400, 6400L, 6400SE, 6410, 6410L, 6410S, 6410SE, 6500, 6500L, 6510, 6510L, 6510S, 6510SE, 6600, 6610, 6610SE, 6800, 6810, 6900, 6910, 6910S.

John Deere - 4039TL001, 4039TL003, 4039TL004, 4039TL006, 4039TL007, 4045DL001, 4045DL002, 4045DL050, 4045TL001, 4045TL002, 4045TL003, 4045TL004, 4045TL050, 4045TL051, 4045TL052, 4045TL053, 4045TL054, 4045TL055, 4045TL056, 4045TL057, 4045TL058, 4045TL059, 4045TL060, 4045TL061, 4045TL063, 4045TLA50, 4045TLA51, 6059TL001, 6068DL050, 6068TL001, 6068TL002, 6068TL050, 6068TL051, 6068TL052, 6068TL054, 6068TLA50, 6068TLA51, 6068TLA52, 6068TLA53.



Engine

Air system / Turbo Charger

VPE9472 Pack qty 1

Turbocharger

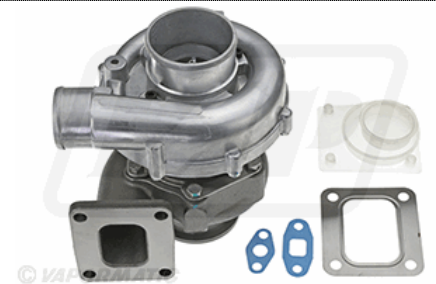
John Deere RE506261

John Deere SE502472

John Deere SE502472NCMA

John Deere - 3410, 3410X, 6110, 6110L, 6110SE, 6120, 6120SE, 6210, 6210L, 6210SE, 6220, 6220SE, 6310, 6310L, 6310S, 6310SE, 6320, 6320SE, 6410, 6410L, 6410S, 6410SE, 6420, 6420S, 6420SE, 6510L, 6510S, 6520SE, 6620SE.

John Deere - 4045HL070, 4045HL072, 4045HLA70, 4045HLA72, 4045HLA73, 4045TL050, 4045TL051, 4045TL052, 4045TL053, 4045TL054, 4045TL055, 4045TL056, 4045TL057, 4045TL058, 4045TL059, 4045TL060, 4045TL061, 4045TL063, 4045TL070, 4045TL071, 4045TL073, 4045TLA50, 4045TLA51, 4045TRT50, 6068TL072, 6068TL073.



Engine

Air system / Turbo Charger

VPE9473 Pack qty 1

Turbocharger

John Deere RE32204NCMA

John Deere SE500284

John Deere - 1065, 1068H, 3130, 3140, 3350, 3650, 4050, 965, 965H, 968H, 975, 975H4, 985.

John Deere - 6359T, 6539T.



Electronic components

Switches / Light switch

VPF3271 **Pack qty 1**

Light switch

Massey Ferguson 1699034M1

Landini - 5830, 6030.

Massey Ferguson - 230, 240, 240S, 243, 250, 253, 263, 265S, 275, 275E, 285S, 290, 290E, 298, 375E, 390E, 530, 530S, 535, 550, 560, 565, 575, 590, 660, 665, 800, 805, 810, 815, 820, 825, 830, 835, 840, 845.

Landini - Platform.



Clutch and flywheel

Clutch / Main drive plate

VPG2462 **Pack qty 1**

While stocks last

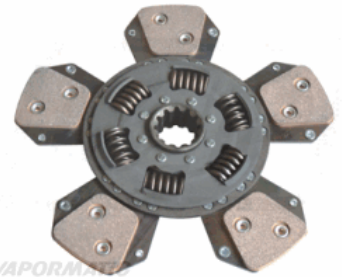
Drive plate

John Deere - 5200, 5300, 5300N, 5310, 5310N, 5400, 5400N, 5410, 5410N, 5500, 5500N, 5510, 5510N.

John Deere - 280/280 Dual LuK.

Technical Details

Manufacture type	LuK
LuK Ref	328033713
Material type	Cerametallic
Plate size	280 mm
Number of splines	12
Number of pads	6
Basic version	Torsion damper plate
Cushion deflection	Dual segment cushion
Friction material	Cerametallic
Torsion damper	Compensating spring type
Spline ID	34 mm
Spline OD	40 mm



All Vapormatic quality replacement parts carry an industry leading **12 month parts and labour warranty**. For further information on specific items please visit www.vapormatic.com

Original equipment manufacturers names and part number are quoted for reference purposes only and are not intended to infer that our replacement parts are used as original equipment.

Public

Clutch and flywheel

Clutch / Main thrust bearing

VPG5320 **Pack qty 1**

Thrust bearing

Case International 9967339

Fiat 9967339

Case International - MXM120, MXM130, MXM140.

Ford New Holland - 8160, 8260, 8360, TM110 Brazil, TM115, TM120, TM120 Brazil, TM125, TM130, TM130 Brazil, TM135, TM135 Brazil, TM140, TM140 Brazil, TM150, TM7010, TM7020, TM7030, TM7040.

Fiat - F100, F110, F115, F120, F130, F140, M100, M115, M135.

Ford New Holland - Single 330, Single 350.

Fiat - Single 330.

International Harvester - Single 330.



Front axle 4wd

Steering / Steering end boot

VPJ3805 **Pack qty 1**

Boot

John Deere AL168710

John Deere - 3040, 3050, 3140, 3350, 3640, 3640S, 5080R, 5080RN, 5090R, 5090RN, 5100R, 5100RN, 5620, 5720, 5820, 6010, 6010SE, 6020, 6020SE, 6110, 6110SE, 6120, 6120SE, 6205, 6210, 6210SE, 6215, 6220, 6220SE, 6300, 6310, 6310SE, 6320, 6320SE, 6400, 6410, 6410SE, 6420, 6420S, 6420SE, 6505, 6506, 6510, 6510SE, 6515, 6520, 6520SE, 6600, 6610, 6610SE, 6620, 6620SE, 6800, 6810, 6820, 6900, 6910, 6910S, 6920, 6920S.

Carraro - Carraro.

Dana 4wd - APL2025, APL2035, APL2045, AS2025, AS2035, AS2045, Dana.

ZF Axles - APL350.



Service

Filtration / Hydraulic filter

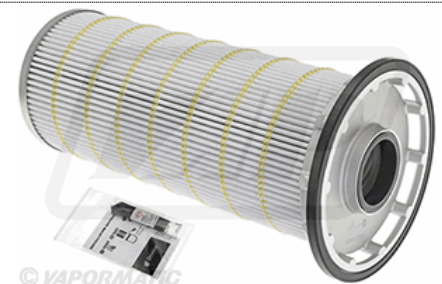
VPK5711 **Pack qty 1**

Hydraulic filter

John Deere RE573817

John Deere - 8225R, 8245R, 8270R, 8295R, 8320R, 8335R, 8345R, 8370R, 8400R.

John Deere - Closed centre.



Service

Filtration / Hydraulic filter

VPK5712 **Pack qty 1**

Hydraulic filter

Case New Holland 84196445

John Deere RE577612

John Deere - 5090R, 5100R, 5115R, 5125R, 7200R, 7210R, 7215R, 7230R, 7250R, 7260R, 7270R, 7280R, 7290R, 7310R, 7R 210, 7R 230, 7R 250, 7R 270, 7R 290, 7R 310, 7R 330, 7R 350, 9360R, 9370R, 9410R, 9420RX, 9460R, 9460RT, 9470R, 9470RT, 9470RX, 9510R, 9510RT, 9520R, 9520RT, 9520RX, 9560R, 9560RT, 9570R, 9570RT, 9570RX, 9620R, 9620RX, 9R 390, 9R 440, 9R 490, 9RX 640, X9 1000, X9 1100.

John Deere - Closed centre.



Linkage

Hydraulic lift / Levelling box assembly

VPL2070 **Pack qty 1**

Levelling box assembly

John Deere AL221507

John Deere - 6150M, 6800, 6810, 6820, 6830, 6830 Premium, 6900, 6910, 6920, 6930, 6930 Premium.
Hexagonal drop shaft. Replaces VPL2059 (round drop shaft).



Linkage

Hydraulic lift / Fixed levelling yoke

VPL2239 **Pack qty 1**

Levelling box yoke

John Deere L200748

John Deere - 6140J, 6145J, 6150J, 6150M, 6150R, 6155J, 6170J, 6170M, 6190J, 6205J, 6210J, 6800, 6810, 6820, 6830, 6830 Premium, 6900, 6910, 6910S, 6920, 6920S, 6920SE, 6930, 6930 Premium, 7430 Premium, 7430E Premium, 7530 Premium, 7530E Premium.



Panels

Bonnet / Front grille

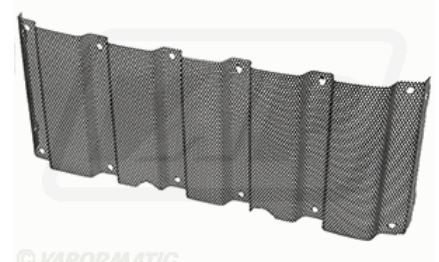
VPM1256 **Pack qty 1**

Front grille insert

John Deere L155181

John Deere - 6020, 6020SE, 6100D, 6105J, 6110D, 6110E, 6110J, 6115D, 6120, 6120SE, 6125D, 6125J, 6130, 6130D, 6140D, 6215, 6220, 6220SE, 6225, 6230, 6320, 6320SE, 6325, 6330, 6415, 6420, 6420S, 6420SE, 6425, 6430, 6515, 6520SE, 6615, 6620SE.

Lower, front bonnet grille.



Whilst specifications are considered to be correct at the time of printing, we reserve the right to change specifications without prior notification. E. & O. E. Original equipment manufacturers names and part numbers are quoted for reference purposes only and are not intended to suggest that our replacement parts are made by the original equipment manufacturer.